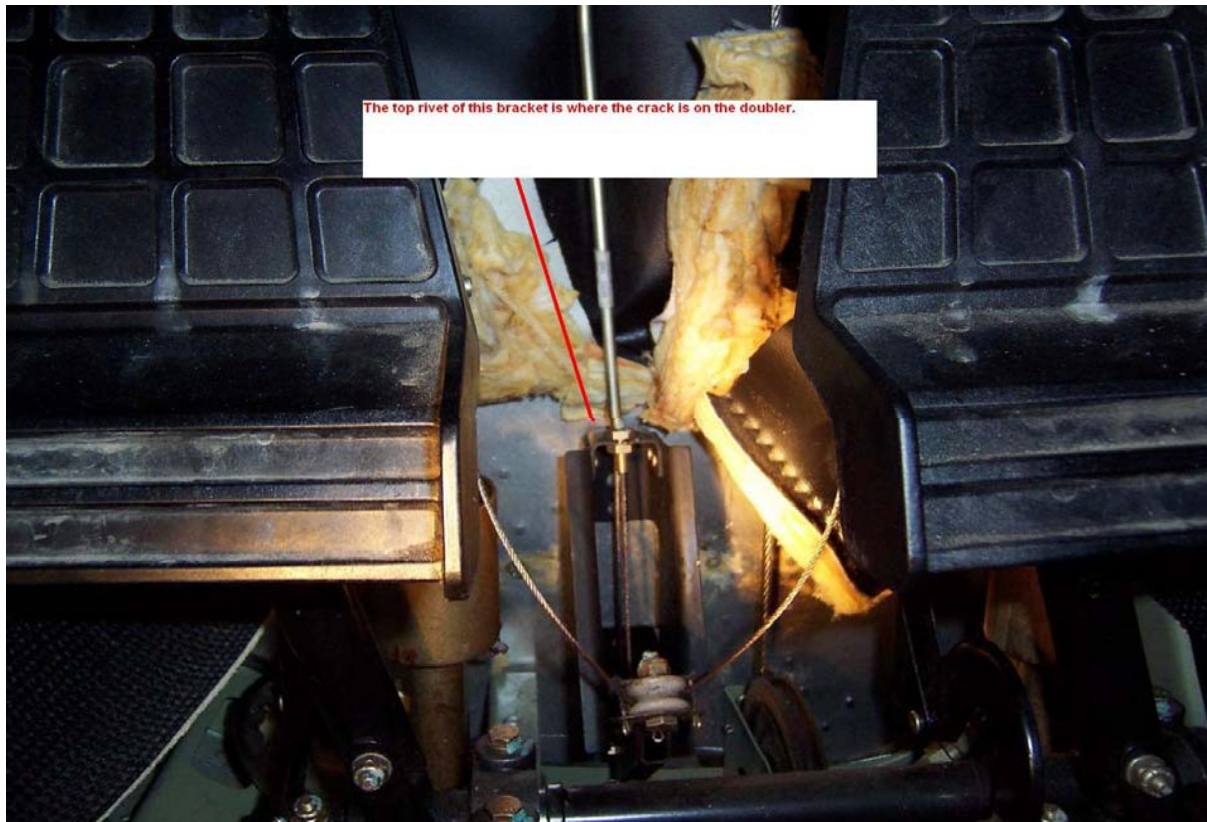


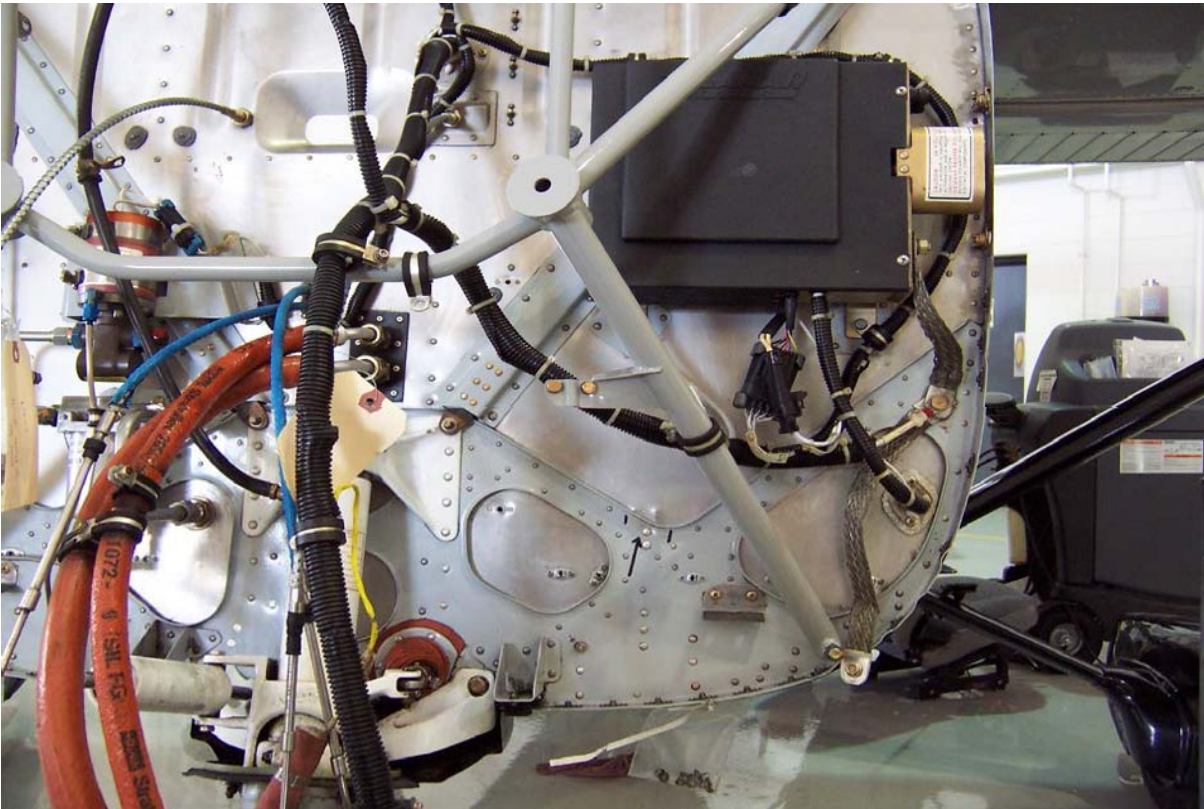
## Cessna 182S, Cracked Firewall Doubler, ATA 5412

"A 1.25-inch long crack was discovered in the firewall forward doubler (P/N 0753600-24)," says this technician. "The crack location can be found by locating the 'Bracket-Parking Brake Control' aft of the firewall. (See Cessna 182S IPC Revision 19, Chapter 32-32-02; figure 01, item #38; P/N 0713070-20.) Translate this location to the forward side of the firewall. The crack was centered around the top rivet attaching the 'Bracket-Parking Brake Control' to the firewall and firewall doubler.

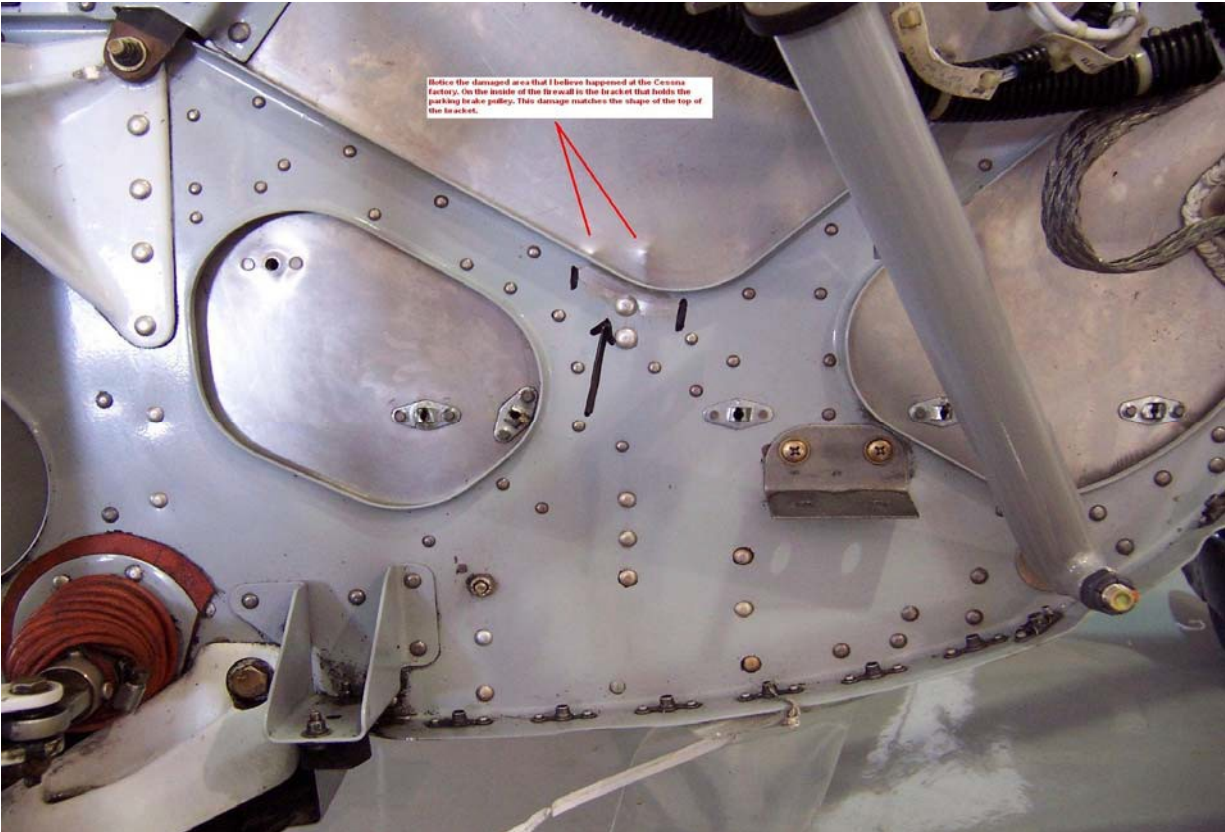
"When the parking brake handle is pulled, this area of the firewall and firewall doubler flex a little. It is very probable this flexing action has caused this crack in the firewall doubler. Two small dents can be seen in the firewall from the 'Bracket-Parking Brake Control.'"



**Cessna 182S, Cracked Firewall Doubler, ATA 5412**

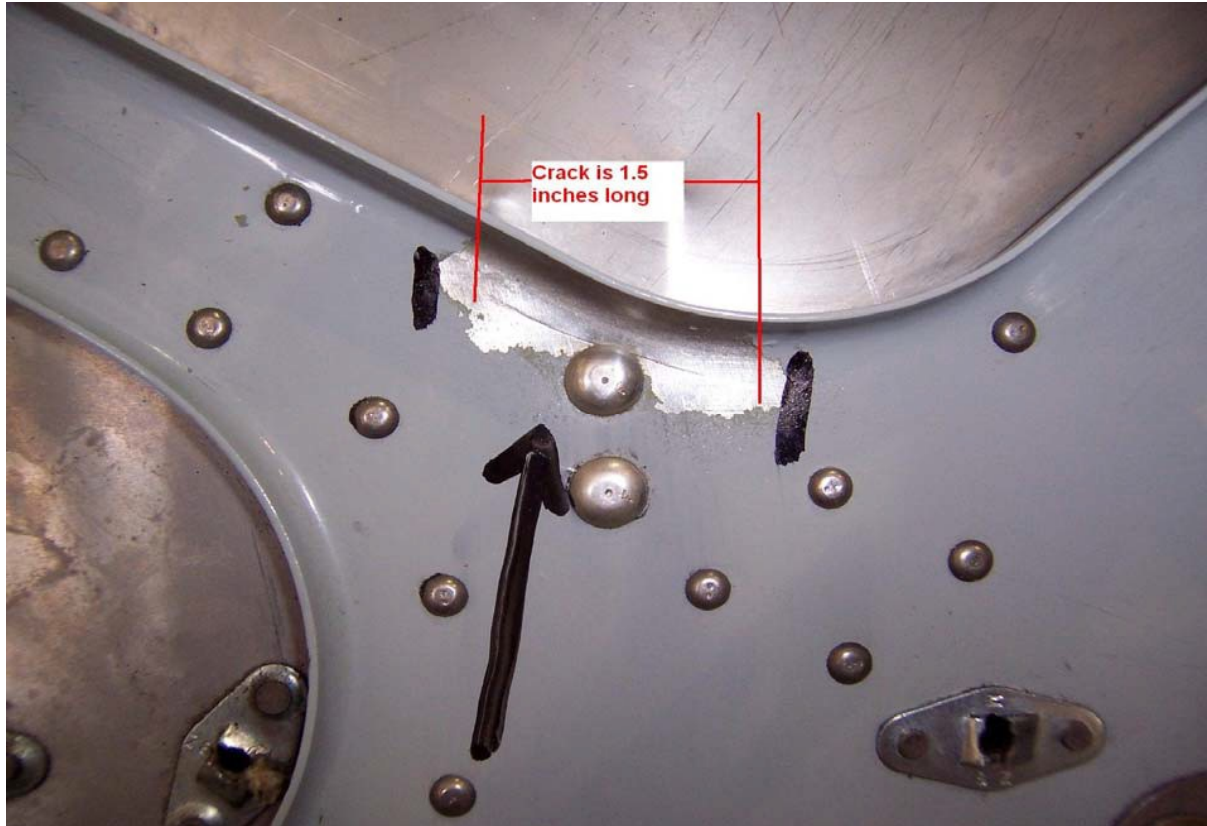


## Cessna 182S, Cracked Firewall Doubler, ATA 5412





**Cessna 182S, Cracked Firewall Doubler, ATA 5412**



Part Total Time 3,996 Hours